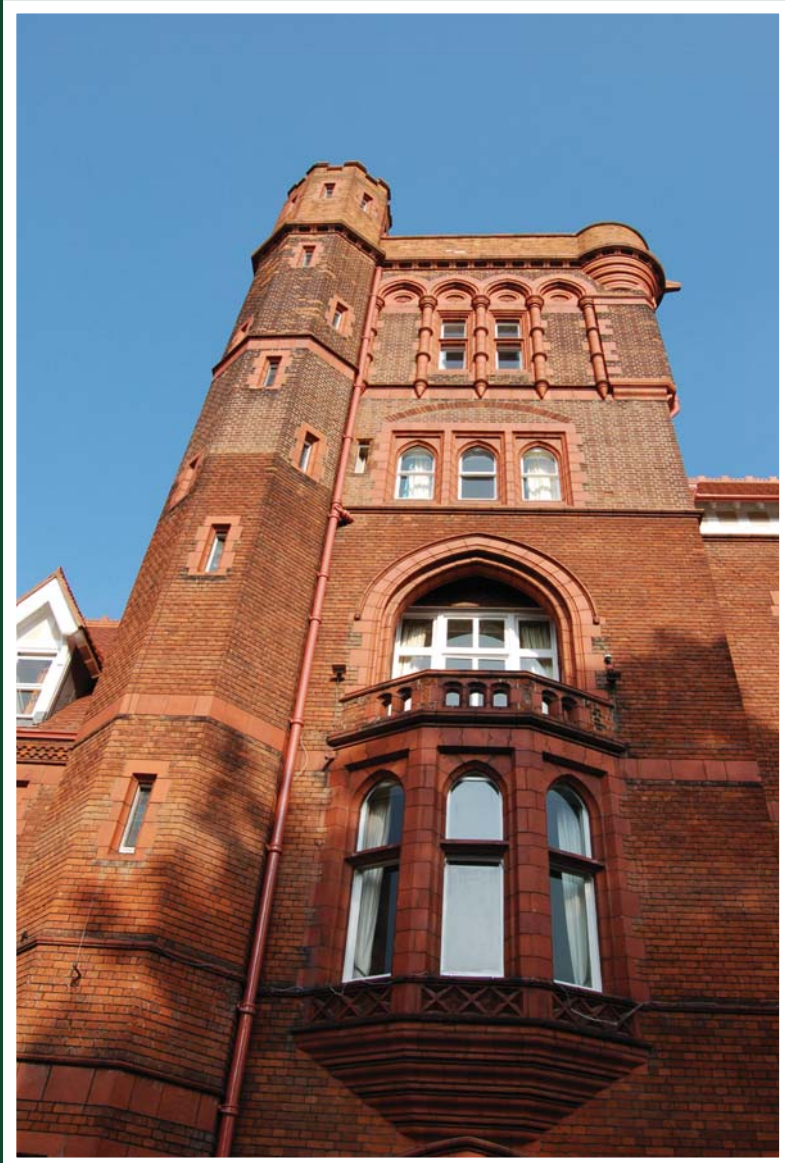


Welcome to Conferences at Girton College

The College is split into two sites – the original Girton College site and it's annexe, Wolfson Court.

	Page
Girton College	
Introduction to Girton	2 – 5
Old Hall	6
Stanley Library	7
Old Kitchens	8
Chapel Box Room	9
Old JCR	10
Emily Davies Rooms	11
Dining at Girton College	12 – 13
Wolfson Court	
Introduction to Wolfson	14 – 15
Fletcher Moulton Room	16
Sheila Gillies Room	17
Dining at Wolfson Court	18 – 19
Directions	20
Room Information	Inserts



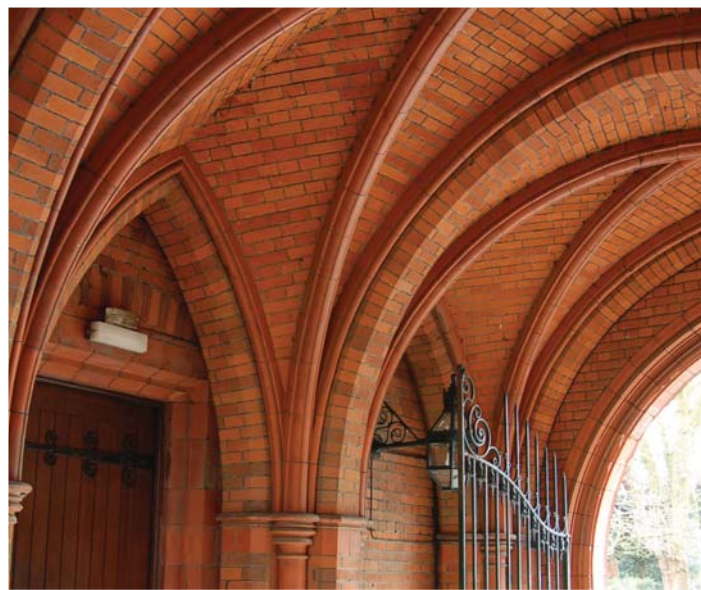
Girton College

Conference facilities in Girton College and its annexe, Wolfson Court, present contrasting environments.

The calm of the 50 acres of trees and grassland that Girton College has occupied for almost 150 years belies its extensive modern facilities and AV equipment.

Leisure time can be enjoyed using the grass and tennis courts, squash court, croquet lawn and indoor swimming pool.







Old Hall



This light, spacious room is one of the largest conference venues we have at Girton. With its wooden floor and oak beams Old Hall is ideal for larger presentations as it has a stage located at one end.

There is a grand piano situated in the large bay window which overlooks part of the extensive College grounds.

Stanley Library

This beautiful country house-style library is one of the most traditional of our conference rooms.

Its shelves are still filled with the original books and there are beautiful views through the twelve arched stained glass windows onto the College grounds. The ambience is inviting and stimulating.



Old Kitchens



This self-contained area, consisting of a spacious reception room, with patio area overlooking the gardens, is a lovely setting during the summer months when the warmer weather is with us. The reception room leads onto the wood-panelled meeting room, which is ideal for the medium-sized conference group.

Recently renovated, and formerly part of the original College kitchens, this room is a more contemporary option at Girton College.

Chapel Box Room

One of the attractive features within this room is the old arched oak chapel door and arched windows, which give it added character.

This comfortable and appealing room is perfect for smaller conference groups, and is in close proximity to the Old JCR when a break out facility or separate dining option may be required.



Old JCR



This comfortable conference room is appropriate for the smaller group meeting, and is close to the Chapel Box Room if a break out option should be required.

It provides a quiet and informal setting with plenty of natural daylight, and affords stunning views of Woodlands Court.

Emily Davies Rooms

These two adjoining small conference rooms are light and inviting, providing a less formal surrounding for a more relaxed gathering.

Situated on the first floor, they benefit from views of the beautiful Emily Davies Court.

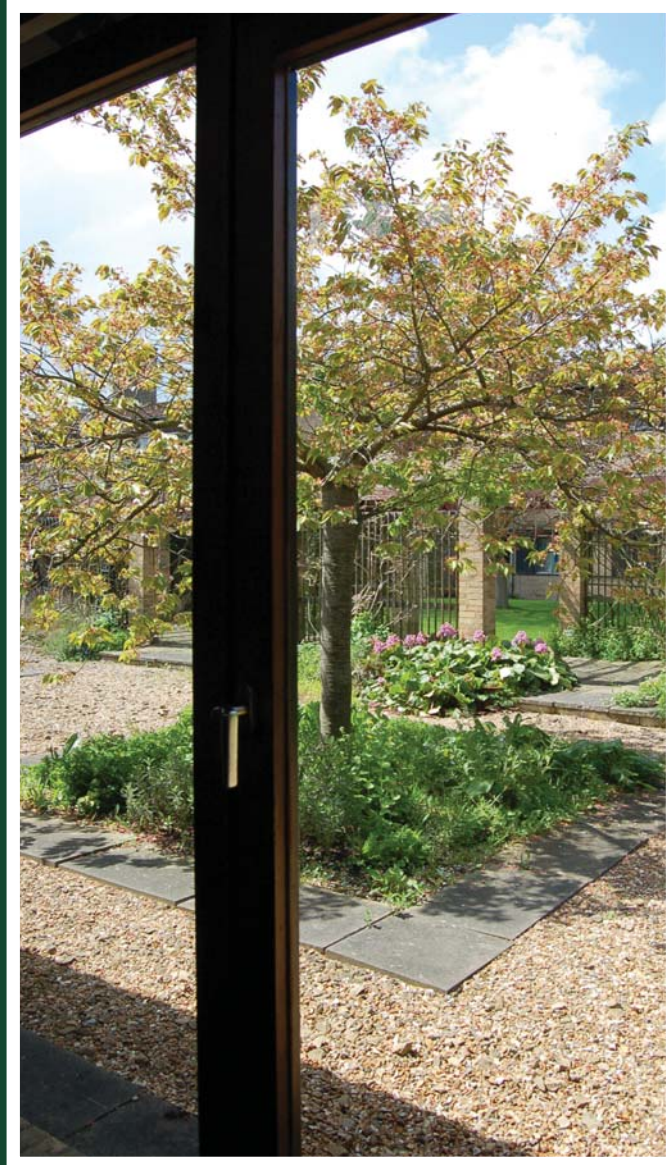


Dining at Girton College

Dining at Girton is always a memorable experience, especially in the splendour of our Victorian Great Hall. We offer a variety of service types to suit every occasion, from formal banquets to the more relaxed self-service from our adjoining modern cafeteria.







Wolfson Court

As the city annexe of Girton College, Wolfson Court is conveniently located in a quiet residential area that is still within easy walking distance of the city centre. It is also convenient for access from the M11 motorway and A14.

Set around seven courtyard gardens, conference holders return to Wolfson Court year after year, attracted by superb standards of service and value for money.



Fletcher Moulton Room



The Fletcher Moulton Room, which also serves as the main Reading Room at Wolfson Court, is a large bright modern room with an integral screen. It is available during the University vacations.

The space works well for large or small groups, and for formal and informal meetings. There is some adjacent break out space.

Sheila Gillies Room

The Sheila Gillies Room is a very adaptable space and works especially well for small to medium group training sessions, and workshops.

It overlooks the Wisteria Courtyard and enjoys lots of natural daylight. During the summer weather outside seating is available for refreshment breaks or even break out sessions.

The adjacent Music Room and Supervision Room are also available outside the academic terms for smaller numbers or extending the Sheila Gillies area.



Dining at Wolfson

The Wolfson Court dining room is a flexible space suitable for informal cafeteria-style dining for up to 160. More formal private dining is available for groups of between 10 and 60. During the summer months, conference clients particularly enjoy lunching in the adjacent garden courtyard, planted with a profusion of hanging baskets and flower displays.

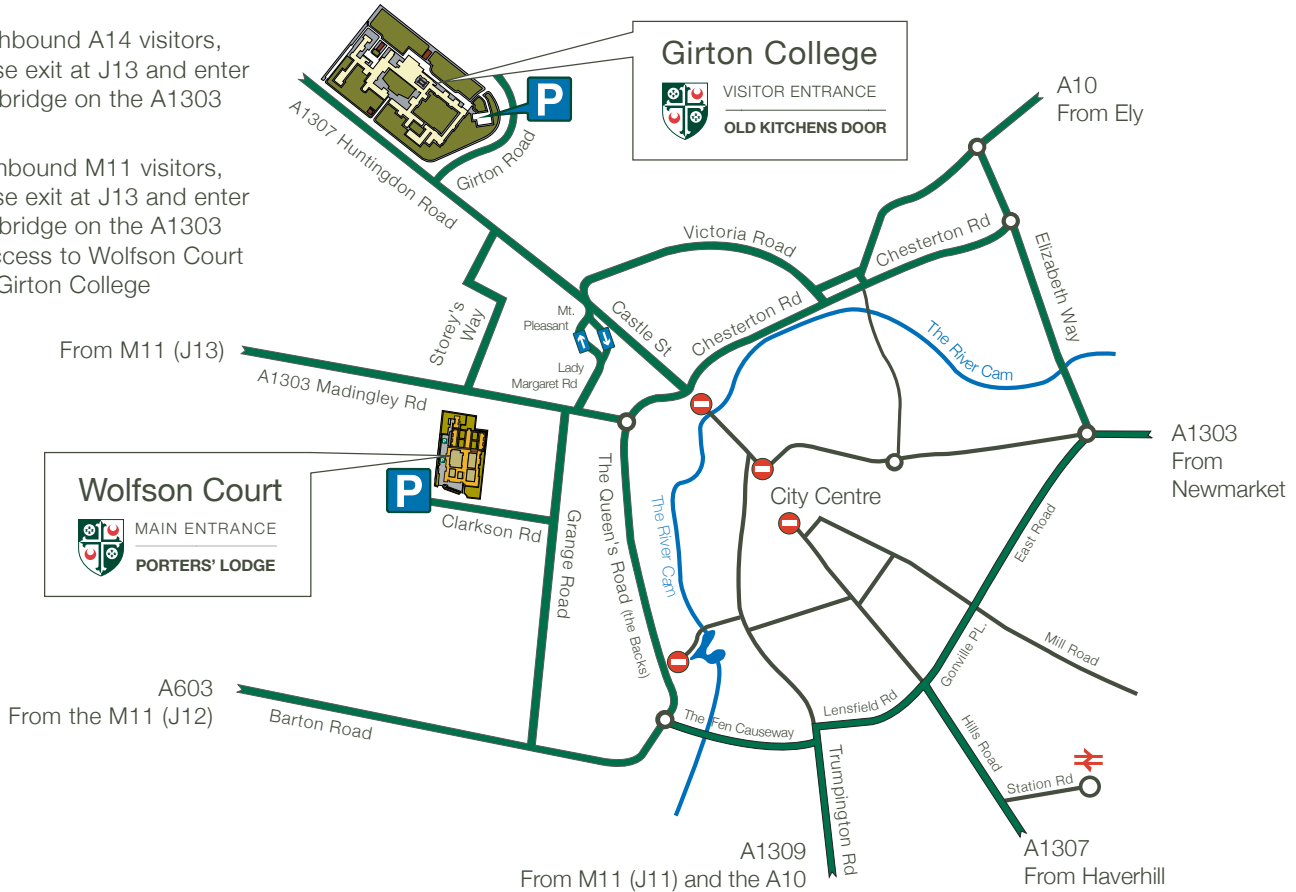




Directions to Girton College and Wolfson Court

Southbound A14 visitors,
please exit at J13 and enter
Cambridge on the A1303

Northbound M11 visitors,
please exit at J13 and enter
Cambridge on the A1303
to access to Wolfson Court
and Girton College



© The Mistress and Fellows of Girton College, Cambridge.

for detailed directions please click www.girton.cam.ac.uk

Girton College, Huntingdon Road, Cambridge CB3 0JG
Wolfson Court, Clarkson Road, Cambridge CB3 0HD

Girton Porters' Lodge +44 (0) 1223 338 999
Wolfson Porters' Lodge +44 (0) 1223 338 892